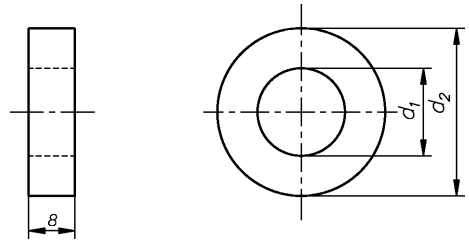


## Scheiben Ausführung A für Stahlkonstruktionen

Washeres for steel constructions

Rondelles plates pour constructions en acier

**DIN 7989**



d1	11	22	24	26	30	33	36	39
d2	21	37	39	44	50	56	60	66
für Schrauben	10	20	22	24	27	30	33	36

### WGR 1697 000

d mm	Inhalt Stck	€ 100 Stck
11,0	100	12,84
14,0	100	13,26
18,0	100	21,75
22,0	100	29,00
24,0	50	33,14

d mm	Inhalt Stck	€ 100 Stck
26,0	50	41,43
30,0	50	58,00
33,0	50	72,50
36,0	50	87,00
39,0	50	93,21

### WGR 1697

**001** galv. verzinkt • zinc plated • galvanisé

d mm	Inhalt Stck	€ 100 Stck
11,0	100	13,26
14,0	100	13,88
18,0	100	22,62

d mm	Inhalt Stck	€ 100 Stck
22,0	100	32,52
24,0	50	33,97
26,0	50	42,26

### WGR 1697

**061** feuerverzinkt (tzn) • hot-dip galvanized • zingué au feu (tzn)

d mm	Inhalt Stck	€ 100 Stck
11,0	100	15,12
14,0	100	16,57
18,0	100	25,27
22,0	100	34,80
24,0	50	36,04

d mm	Inhalt Stck	€ 100 Stck
26,0	50	43,50
30,0	50	62,14
33,0	50	82,24
36,0	25	111,03
39,0	50	126,36