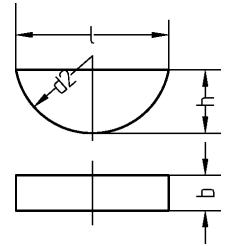


## Scheibensfedern

Woodruff keys

Clavettes disques



## DIN 6888

### WGR 1675 000

b	h	l	d2	d1	Wellen	Inhalt	€
mm	mm	mm	mm	mm	mm	Stck	100 Stck
2,0	2,6	6,76	7	68	200	200	14,00
2,0	3,7	9,66	10	68	200	200	14,32
2,5	3,7	9,66	10	810	200	200	14,50
3,0	3,7	9,66	10	810	100	100	14,68
3,0	5,0	12,65	13	810	100	100	14,90
3,0	6,5	15,72	16	-	100	100	15,08
4,0	5,0	12,65	13	1020	500	500	15,40
4,0	6,5	15,72	16	1012	100	100	16,28
4,0	7,5	18,57	19	-	100	100	20,64
5,0	6,5	15,72	16	1217	100	100	17,48
5,0	7,5	18,57	19	1217	100	100	22,20

b	h	l	d2	d1	Wellen	Inhalt	€
mm	mm	mm	mm	mm	mm	Stck	100 Stck
5,0	9,0	21,63	22	-	100	100	26,56
6,0	7,5	18,57	19	1722	100	100	23,76
6,0	9,0	21,63	22	1722	100	100	31,72
7,0	10,0	24,49	25	-	100	100	81,80
8,0	9,0	21,63	22	2230	100	100	60,72
8,0	11,0	27,35	28	2230	100	100	65,28
8,0	13,0	31,43	32	-	100	100	81,92
10,0	11,0	27,35	28	3038	100	100	116,00
10,0	13,0	31,43	32	3038	100	100	145,00
10,0	16,0	43,08	45	-	100	100	163,68