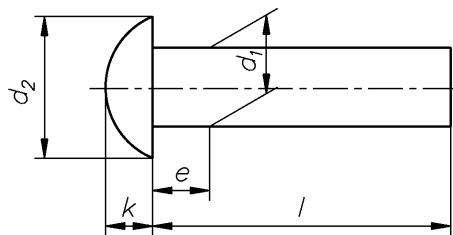


Halbrundniete St

Round head rivets

Rivets à tête demi-ronde



DIN 660

d1	3	4	5	6	8
d2	5,2	7	8,8	10,5	14
e	1,5	2	2,5	3	4
k	1,8	2,4	3	3,6	4,8

WGR 1572 000

d	l	Inhalt	€
mm	mm	Stck	100 Stck
3,0	6	2000	0,78
3,0	8	2000	0,89
3,0	10	2000	1,14

d	l	Inhalt	€
mm	mm	Stck	100 Stck
3,0	25	1000	2,06
3,0	30	1000	2,24
4,0	6	2000	1,24
4,0	8	2000	1,46
4,0	10	2000	1,67
4,0	12	2000	2,03
4,0	16	2000	2,35
4,0	20	1000	3,24
4,0	25	1000	3,56
4,0	30	1000	3,77
4,0	35	1000	3,91
4,0	40	500	4,59
5,0	6	1000	1,60
5,0	8	1000	1,71
5,0	10	1000	2,24
5,0	12	1000	2,28
5,0	16	1000	2,74
5,0	20	1000	3,24
5,0	25	500	3,84
5,0	30	500	4,12
5,0	35	500	5,01
5,0	40	500	5,87
5,0	45	250	6,04
5,0	50	250	6,36

d	l	Inhalt	€
mm	mm	Stck	100 Stck
3,0	12	2000	1,32
3,0	16	2000	1,60
3,0	20	2000	1,88

d	l	Inhalt	€
mm	mm	Stck	100 Stck
5,0	60	250	8,89
6,0	8	1000	2,28
6,0	10	1000	2,63
6,0	12	1000	3,20
6,0	16	1000	3,59
6,0	20	500	4,12
6,0	25	500	4,91
6,0	30	500	6,12
6,0	35	500	6,51
6,0	40	250	7,25
6,0	45	250	7,57
6,0	50	250	8,39
6,0	60	100	10,88
8,0	10	500	4,30
8,0	12	500	4,76
8,0	16	500	5,44
8,0	20	250	6,04
8,0	25	250	6,86
8,0	30	250	8,07
8,0	35	250	9,74
8,0	40	250	10,35
8,0	45	100	11,66
8,0	50	100	12,91
8,0	60	100	13,80