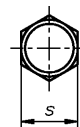
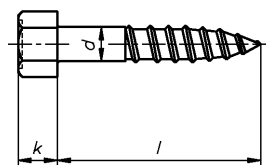


Sechskant-Holzschrauben

Hexagon head wood screws

Vis à bois à tête hexagonale



DIN 571

d	5	6	8	10	12	16
k	3,5	4	5,5	7	8	10
s	8	10	13	17	19	24

WGR 0008

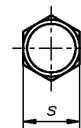
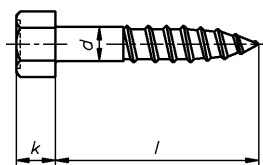
001 galv. verzinkt • zinc plated • galvanisé

d	l	Inhalt	€	d	l	Inhalt	€
mm	mm	Stck	100 Stck	mm	mm	Stck	100 Stck
5,0	20	500	1,33	6,0	160	100	26,00
5,0	25	500	1,53	8,0	25	200	3,94
5,0	30	500	1,78	8,0	30	200	4,39
5,0	35	200	1,99	8,0	35	200	4,85
5,0	40	200	2,20	8,0	40	200	5,30
5,0	45	200	2,40	8,0	45	200	5,47
5,0	50	200	2,65	8,0	50	200	5,88
5,0	55	200	3,07	8,0	55	200	6,34
5,0	60	200	3,07	8,0	60	200	6,75
6,0	20	500	1,78	8,0	65	200	7,17
6,0	25	500	2,03	8,0	70	200	7,62
6,0	30	500	2,32	8,0	75	200	8,08
6,0	35	200	2,61	8,0	80	200	8,58
6,0	40	200	2,82	8,0	90	100	9,53
6,0	45	200	3,07	8,0	100	100	10,44
6,0	50	200	3,27	8,0	110	100	11,27
6,0	55	200	3,56	8,0	120	100	12,18
6,0	60	200	3,81	8,0	130	100	15,18
6,0	65	200	4,10	8,0	140	50	16,20
6,0	70	200	4,35	8,0	150	50	17,27
6,0	75	200	4,64	8,0	160	50	18,29
6,0	80	200	4,89	8,0	180	50	21,54
6,0	90	100	5,59	8,0	200	50	23,77
6,0	100	100	6,17	8,0	220	50	71,78
6,0	110	100	6,71	8,0	240	50	88,03
6,0	120	100	7,29	10,0	30	100	8,29
6,0	130	100	8,96	10,0	35	100	9,07
6,0	140	100	9,70	10,0	40	100	9,86
6,0	150	100	12,54	10,0	45	100	10,56

Sechskant-Holzschrauben

Hexagon head wood screws

Vis à bois à tête hexagonale



DIN 571

WGR 0008

001 galv. verzinkt • zinc plated • galvanisé

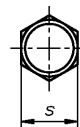
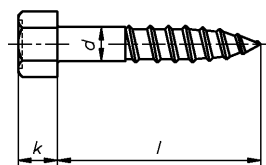
d mm	l mm	Inhalt Stck	€ 100 Stck
10,0	50	100	10,77
10,0	55	100	11,10
10,0	60	100	11,81
10,0	65	100	12,47
10,0	70	100	13,17
10,0	75	100	13,88
10,0	80	100	14,62
10,0	90	100	16,16
10,0	100	100	17,48
10,0	110	50	18,93
10,0	120	50	20,38
10,0	130	50	21,83
10,0	140	50	23,32
10,0	150	50	24,77
10,0	160	50	26,22
10,0	170	50	30,04
10,0	180	50	32,15
10,0	190	50	32,94
10,0	200	50	35,38
10,0	220	25	39,19
10,0	240	25	45,61
10,0	260	25	53,03
10,0	280	25	57,54
10,0	300	25	62,06
12,0	40	100	13,59
12,0	45	100	14,58
12,0	50	100	14,96
12,0	55	100	15,99
12,0	60	100	17,07
12,0	65	50	18,02
12,0	70	50	19,02
12,0	80	50	21,25
12,0	90	50	23,37
12,0	100	50	25,40

d mm	l mm	Inhalt Stck	€ 100 Stck
12,0	110	50	27,47
12,0	120	50	29,46
12,0	130	50	31,57
12,0	140	50	33,64
12,0	150	50	35,71
12,0	160	25	37,78
12,0	180	25	43,33
12,0	200	25	47,64
12,0	220	25	51,91
12,0	240	25	56,22
12,0	260	25	68,48
12,0	280	25	73,33
12,0	300	25	78,18
12,0	320	25	107,18
12,0	340	25	113,43
12,0	360	25	119,73
12,0	380	25	125,98
12,0	400	25	144,34
16,0	60	50	61,73
16,0	70	25	61,77
16,0	80	25	62,97
16,0	90	25	64,21
16,0	100	25	67,90
16,0	110	25	71,63
16,0	120	25	75,03
16,0	130	25	79,67
16,0	140	25	84,02
16,0	150	25	87,95
16,0	160	25	91,93
16,0	180	25	98,19
16,0	200	25	107,18
16,0	220	25	113,35
16,0	240	25	122,71
16,0	260	25	142,97

Sechskant-Holzschrauben

Hexagon head wood screws

Vis à bois à tête hexagonale



DIN 571

WGR 0008

001 galv. verzinkt • zinc plated • galvanisé

d mm	l mm	Inhalt Stck	€ 100 Stck
16,0	280	25	153,16
16,0	300	25	163,27
16,0	320	25	196,45
16,0	340	25	208,88

d mm	l mm	Inhalt Stck	€ 100 Stck
16,0	360	25	221,31
16,0	380	25	233,74
16,0	400	25	246,17

WGR 0008

061 feuerverzinkt (tzn) • hot-dip galvanized • zingué au feu (tzn)

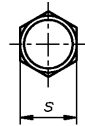
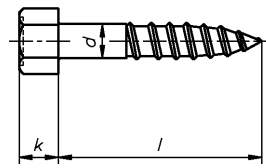
d mm	l mm	Inhalt Stck	€ 100 Stck
6,0	25	500	2,69
6,0	30	500	3,94
6,0	35	200	3,27
6,0	40	200	3,77
6,0	45	200	3,98
6,0	50	200	4,43
6,0	60	200	5,66
6,0	65	200	6,08
6,0	70	200	6,55
6,0	75	200	6,83
6,0	80	200	7,66
6,0	90	100	8,87
6,0	100	100	9,29
6,0	120	100	19,92
8,0	25	200	5,85
8,0	30	200	5,39
8,0	35	200	5,47
8,0	40	200	6,84
8,0	45	200	6,96
8,0	50	200	8,00
8,0	55	200	8,62
8,0	60	200	9,20

d mm	l mm	Inhalt Stck	€ 100 Stck
8,0	65	200	9,78
8,0	70	200	10,40
8,0	75	200	12,35
8,0	80	200	12,63
8,0	90	100	13,37
8,0	100	100	15,51
8,0	120	100	17,88
8,0	130	100	20,75
8,0	140	50	22,01
8,0	150	50	23,21
8,0	160	50	24,89
8,0	180	50	47,68
8,0	200	50	55,39
10,0	30	100	12,58
10,0	40	100	13,09
10,0	45	100	14,17
10,0	50	100	15,00
10,0	55	100	15,12
10,0	60	100	16,07
10,0	65	100	16,94
10,0	70	100	17,90
10,0	75	100	18,60

Sechskant-Holzschrauben

Hexagon head wood screws

Vis à bois à tête hexagonale



DIN 571

WGR 0008

061 feuerverzinkt (tzn) • hot-dip galvanized • zingué au feu (tzn)

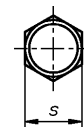
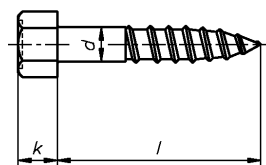
d mm	l mm	Inhalt Stck	€ 100 Stck
10,0	80	100	19,18
10,0	90	100	21,96
10,0	100	100	24,79
10,0	110	100	28,88
10,0	120	50	31,06
10,0	130	50	32,92
10,0	140	50	35,52
10,0	150	50	37,75
10,0	160	50	45,45
10,0	180	50	51,68
10,0	200	50	52,05
10,0	220	25	58,73
10,0	240	25	71,31
10,0	260	25	81,85
12,0	40	100	20,43
12,0	50	100	20,01
12,0	60	100	23,24
12,0	65	50	24,36
12,0	70	50	25,73
12,0	75	50	27,14
12,0	80	50	28,83
12,0	90	50	29,12
12,0	100	50	33,93
12,0	110	50	37,12
12,0	120	50	38,90
12,0	130	50	47,26

d mm	l mm	Inhalt Stck	€ 100 Stck
12,0	140	50	50,93
12,0	150	50	53,49
12,0	160	25	56,50
12,0	180	25	65,37
12,0	200	25	68,16
12,0	220	25	80,51
12,0	240	25	81,95
12,0	260	25	102,42
12,0	280	25	109,66
12,0	300	25	115,70
16,0	70	25	90,54
16,0	75	25	95,18
16,0	80	25	63,65
16,0	90	25	68,34
16,0	100	25	71,18
16,0	120	25	86,64
16,0	130	25	92,02
16,0	140	25	91,56
16,0	150	25	107,58
16,0	160	25	111,10
16,0	180	25	133,53
16,0	200	25	143,05
16,0	220	25	155,81
16,0	240	25	182,88
16,0	260	25	212,36
16,0	300	25	250,90

Eternitschrauben (ähnlich DIN 571)

Hexagon wood screws/coach screws

Vis à bois à tête hexagonale



DIN 571

d	7
k	5
s	12

WGR 0168

021 galv. verzinkt gelb chromatiert • yellow zinc plated • galvanisé jaune cémenté au chrome

d mm	l mm	Inhalt Stck	€ 100 Stck	d mm	l mm	Inhalt Stck	€ 100 Stck
7,0	60	100	8,39	7,0	140	100	15,89
7,0	70	100	8,56	7,0	150	100	16,25
7,0	80	100	9,67	7,0	160	100	17,56
7,0	90	100	10,56	7,0	170	100	26,56
7,0	100	100	10,94	7,0	190	100	50,00
7,0	110	100	12,22	7,0	200	100	57,67
7,0	120	100	13,65	7,0	210	100	62,72
7,0	130	100	14,59				

WGR 0168

061 feuerverzinkt (tzn) • hot-dip galvanized • zingué au feu (tzn)

d mm	l mm	Inhalt Stck	€ 100 Stck	d mm	l mm	Inhalt Stck	€ 100 Stck
7,0	60	100	7,94	7,0	110	100	15,17
7,0	70	100	8,94	7,0	120	100	17,00
7,0	80	100	10,11	7,0	130	100	17,78
7,0	90	100	13,11	7,0	150	100	20,83
7,0	100	100	14,50				