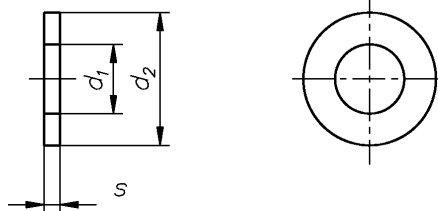


Scheiben Form R

Round washers; especially for wood constructions
Rondelles pour constructions en bois

Form R



DIN 440 DIN-EN-ISO 7094

d1	5,5	6,6	9	11	13,5	17,5	22	24	26	30	33
d2	18	22	28	34	44	56	72	80	85	98	105
s	2	2	3	3	4	5	6	6	6	6	6
für Schrauben	M 5	M 6	M 8	M 10	M 12	M 16	M 20	M 22	M 24	M 27	M 30

WGR 1543 000

d mm	Inhalt Stck	€ 100 Stck
5,5	1000	1,70
6,6	500	1,79
9,0	250	5,53
11,0	250	7,23
13,5	100	13,39
17,5	100	27,00

d mm	Inhalt Stck	€ 100 Stck
22,0	50	38,63
24,0	50	96,48
26,0	25	120,00
30,0	25	141,91
33,0	10	189,21

WGR 1543

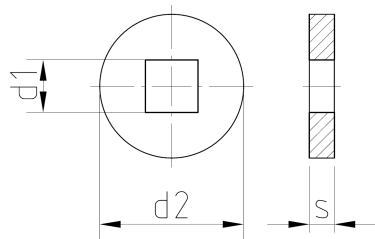
001 galv. verzinkt • zinc plated • galvanisé

d mm	Inhalt Stck	€ 100 Stck
5,5	1000	1,87
6,6	500	2,51
9,0	250	6,38
11,0	250	8,25
13,5	100	15,64
17,5	100	30,64

d mm	Inhalt Stck	€ 100 Stck
22,0	50	68,03
24,0	50	104,81
26,0	25	145,80
30,0	25	190,40
33,0	25	215,99

Scheiben Form V

Washers with square hole; especially for wood constructions
Rondelles préponderant pour constructions en bois forme V



DIN 440

d1	9	11	14	18
d2	28	34	45	58
s	3	3	4	5
für Schrauben	M	M	M	M
	8	10	12	16

WGR 1544

001 galv. verzinkt • zinc plated • galvanisé

d mm	Inhalt Stück	€ 100 Stück	d mm	Inhalt Stück	€ 100 Stück
9,0	250	6,98	14,0	100	27,90
11,0	250	12,75	18,0	100	49,50