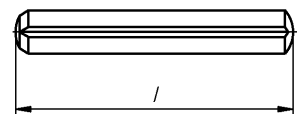
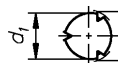


Zylinderkerbstifte 6.8

Grooved pins, full length parallel grooved with chamfer
Goupilles cannelées cylindriques



DIN 1473 DIN-EN-ISO 8740

d1	2	2.5	3	4	5	6	8
----	---	-----	---	---	---	---	---

WGR 1642 000

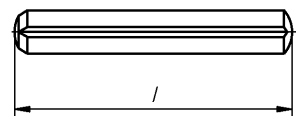
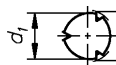
d mm	l mm	Inhalt Stck	€ 100 Stck	d mm	l mm	Inhalt Stck	€ 100 Stck
2,0	4	1000	4,22	3,0	16	1000	5,47
2,0	5	1000	4,22	3,0	18	1000	5,47
2,0	6	1000	4,22	3,0	20	1000	5,91
2,0	8	1000	4,27	3,0	22	1000	5,91
2,0	10	1000	4,27	3,0	24	1000	5,96
2,0	12	1000	4,44	3,0	26	1000	6,13
2,0	14	1000	4,44	3,0	28	1000	6,13
2,0	16	1000	4,44	3,0	30	1000	6,18
2,0	18	1000	4,44	4,0	6	1000	6,09
2,0	20	1000	4,93	4,0	8	1000	6,27
2,0	22	1000	4,93	4,0	10	500	6,40
2,0	24	1000	5,24	4,0	12	1000	6,58
2,0	26	1000	5,24	4,0	14	1000	6,67
2,0	28	1000	6,49	4,0	16	1000	6,76
2,0	30	500	6,80	4,0	18	500	6,85
2,5	6	1000	4,89	4,0	20	500	6,98
2,5	8	1000	4,89	4,0	22	500	7,16
2,5	10	1000	4,93	4,0	24	500	7,24
2,5	12	1000	5,11	4,0	26	500	7,33
2,5	14	1000	5,11	4,0	28	500	7,47
2,5	16	1000	5,24	4,0	30	500	7,60
2,5	18	1000	5,24	4,0	32	500	7,91
2,5	20	1000	5,38	4,0	36	500	8,22
2,5	22	1000	5,42	4,0	40	500	8,62
2,5	24	1000	5,47	4,0	45	500	9,64
2,5	26	1000	5,47	5,0	8	500	7,24
2,5	28	1000	5,69	5,0	10	500	7,42
2,5	30	1000	5,69	5,0	12	500	7,64
3,0	6	1000	5,02	5,0	14	500	7,87
3,0	8	1000	5,07	5,0	16	500	8,04
3,0	10	1000	5,20	5,0	18	500	8,27
3,0	12	1000	5,20	5,0	20	500	8,53
3,0	14	1000	5,47	5,0	22	500	8,76

[Kongerslev-Fasteners Aps](http://WWW.TORX.DK)

Tlf: +45 75154999

Zylinderkerbstifte 6.8

Grooved pins, full length parallel grooved with chamfer
Goupilles cannelées cylindriques



DIN 1473 **DIN-EN-ISO 8740**

WGR 1642 000

d mm	l mm	Inhalt Stck	€ 100 Stck
5,0	24	500	8,98
5,0	26	500	9,33
5,0	28	500	9,69
5,0	30	500	10,09
5,0	32	500	10,67
5,0	36	500	11,11
5,0	40	500	11,64
5,0	45	500	12,40
6,0	10	500	10,18
6,0	12	500	10,36
6,0	14	500	10,62
6,0	16	500	10,89
6,0	18	500	11,20
6,0	20	500	11,51
6,0	22	500	11,87
6,0	24	500	12,31
6,0	26	500	12,62
6,0	28	500	12,98
6,0	30	500	13,33
6,0	32	500	13,91
6,0	36	500	14,40
6,0	40	500	15,07

d mm	l mm	Inhalt Stck	€ 100 Stck
6,0	45	250	16,09
6,0	50	250	17,24
6,0	55	250	18,44
6,0	60	250	19,73
8,0	12	500	15,87
8,0	14	500	16,31
8,0	16	500	16,71
8,0	18	500	17,20
8,0	20	500	17,64
8,0	22	500	18,13
8,0	24	500	18,58
8,0	26	500	19,02
8,0	28	250	19,47
8,0	30	250	19,91
8,0	32	250	21,38
8,0	36	250	22,31
8,0	40	250	23,69
8,0	45	250	26,31
8,0	50	100	27,96
8,0	55	100	29,78
8,0	60	100	32,71