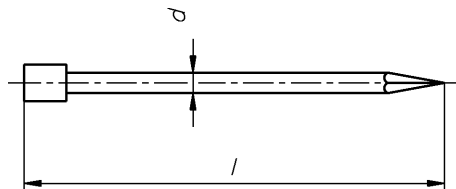


Drahtstifte Stauchkopf

Round nails with cold headed head

Pointes à tête ronde aplatie



DIN 1152 DIN-EN 10230

d x l	1,0x15	1,2x20	1,4x25	1,6x30	1,8x35	2,0x40	2,2x45	2,2x50	2,2x55	2,5x55	2,5x60
	2,8x65	3,1x70	3,1x80	3,8x100							

WGR 1625 000

d mm	l mm	Inhalt kg	€ 100 kg
1,0	15	1	1488,45
1,2	20	1	527,78
1,4	25	1	461,11
1,6	30	1	444,44
1,8	35	2,500	375,00
2,0	40	2,500	316,67
2,2	45	2,500	316,67
2,2	50	2,500	316,67

d mm	l mm	Inhalt kg	€ 100 kg
2,2	55	2,500	316,67
2,5	55	2,500	361,11
2,5	60	2,500	397,22
2,8	65	2,500	316,67
3,1	70	2,500	302,78
3,1	80	5	286,11
3,8	100	5	383,33