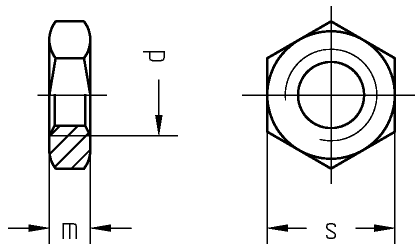


Sechskantmuttern, niedrig A2

Hexagon thin nuts
Ecrous à six pans



DIN 439 DIN-EN-ISO 4035

d	M 2	M 2,5	M 3	M 4	M 5	M 6	M 8	M 10	M 12	M 16	M 20	M 24	M 27	M 30
m	1,2	1,6	1,8	2,2	2,7	3,2	4	5	6	8	10	12	13,5	15
s	4	5	5,5	7	8	10	13	17	19	24	30	36	41	46
e	4,32	5,45	6,01	7,66	8,79	11,05	14,38	18,90	21,1	26,75	32,95	39,55	45,2	50,85

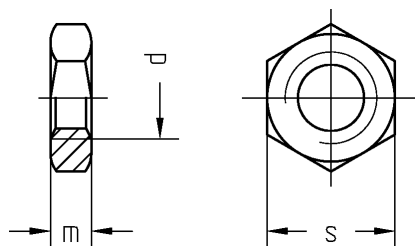
WGR 3329 000

d	Inhalt	€
mm	Stck	100 Stck
M 2	1000	5,44
M 2,5	1000	5,44
M 3	1000	2,00
M 4	1000	2,06
M 5	1000	2,11
M 6	1000	3,17
M 8	1000	6,67

d	Inhalt	€
mm	Stck	100 Stck
M 10	500	13,89
M 12	500	20,33
M 16	200	39,44
M 20	100	74,06
M 24	50	266,67
M 27	50	452,22
M 30	25	637,78

Sechskantmuttern, niedrig A4

Hexagon thin nuts
Ecrous à six pans, forme bas



DIN 439 DIN-EN-ISO 4035

d	M 3	M 4	M 5	M 6	M 8	M 10	M 12	M 16	M 20	M 24	M 30
m	1,8	2,2	2,7	3,2	4	5	6	8	10	12	15
s	5,5	7	8	10	13	17	19	24	30	36	46
e	6,01	7,66	8,79	11,05	14,38	18,90	21,1	26,75	32,95	39,55	50,85

WGR 3573 000

d	Inhalt	€
mm	Stck	100 Stck
M 3	1000	3,39
M 4	1000	3,83

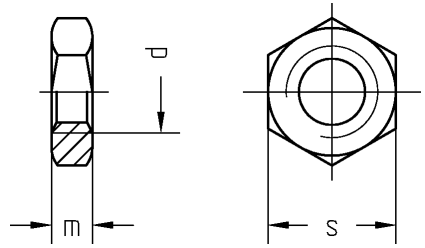
d	Inhalt	€
mm	Stck	100 Stck
M 5	1000	4,06
M 6	1000	5,89

Sechskantmuttern, niedrig A4

Hexagon thin nuts

Ecrous à six pans, forme bas

DIN 439 DIN-EN-ISO 4035



WGR 3573 000

d mm	Inhalt Stck	€ 100 Stck
M 8	2000	11,39
M 10	500	17,33
M 12	50	21,17
M 16	200	66,11

d mm	Inhalt Stck	€ 100 Stck
M 20	100	122,22
M 24	50	333,17
M 30	50	666,67